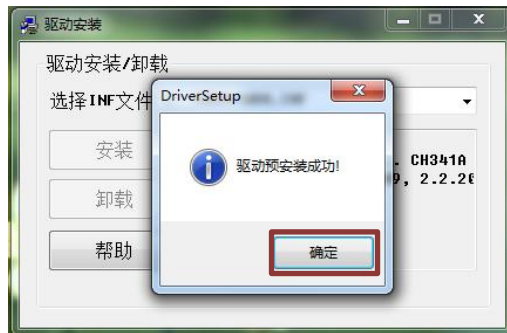


1. Open the Driver file, double click CH341PAR.EXE;

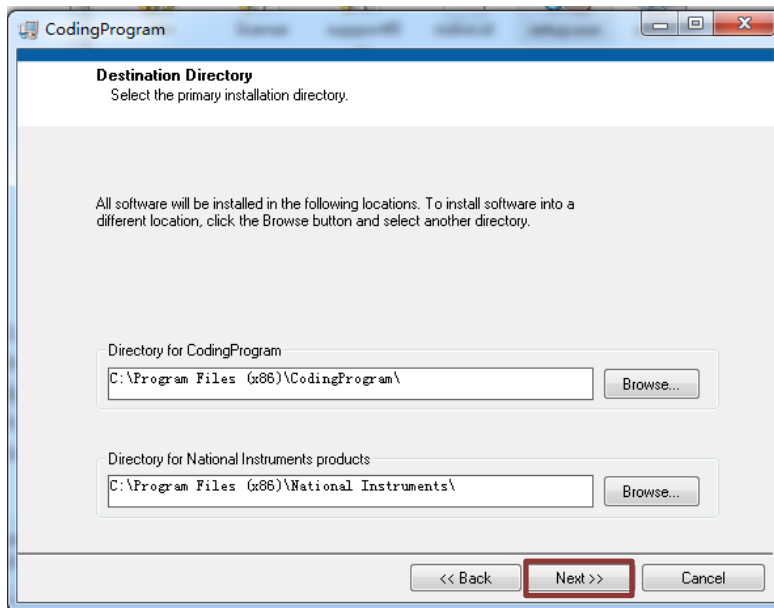


Click **【Install】**

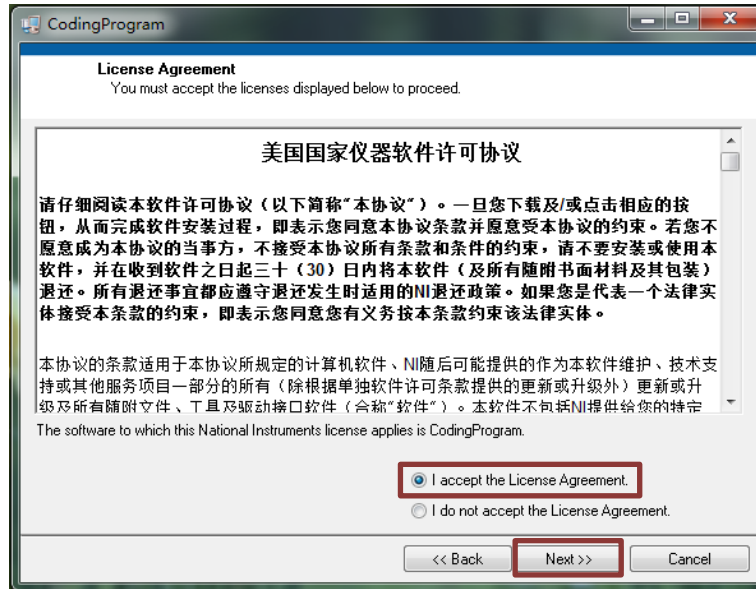


Click **【Yes】**, close it

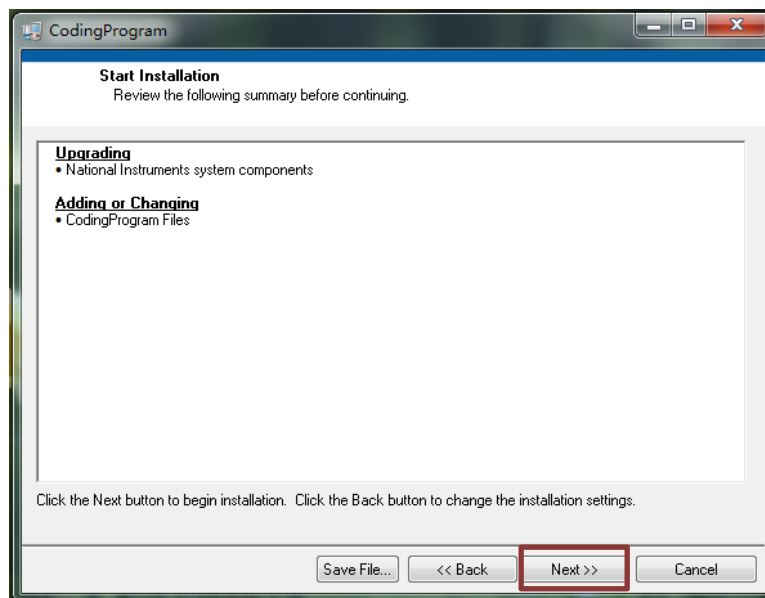
2. Open the Setup file, double click run Setup.exe;



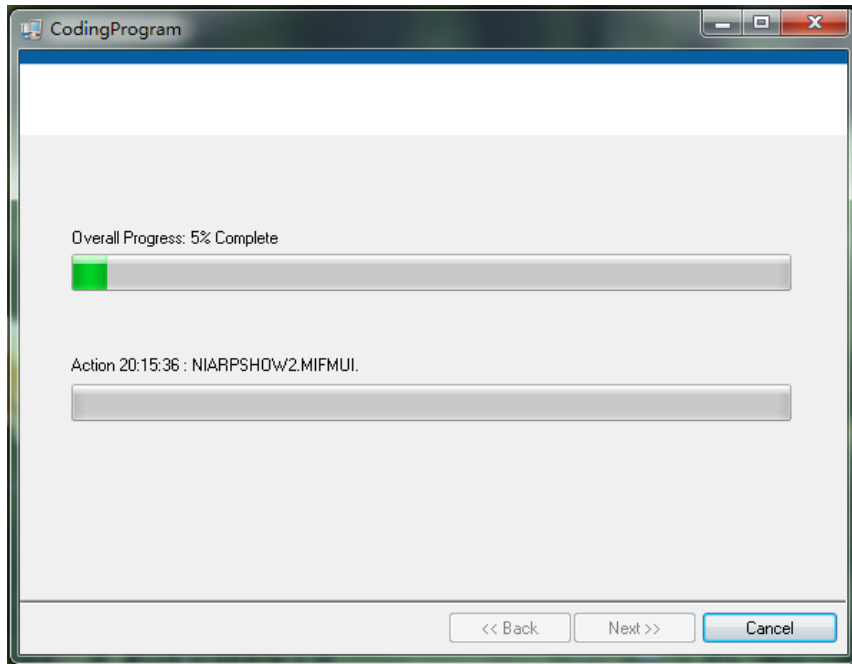
Select installation path, Or click directly **【Next】**



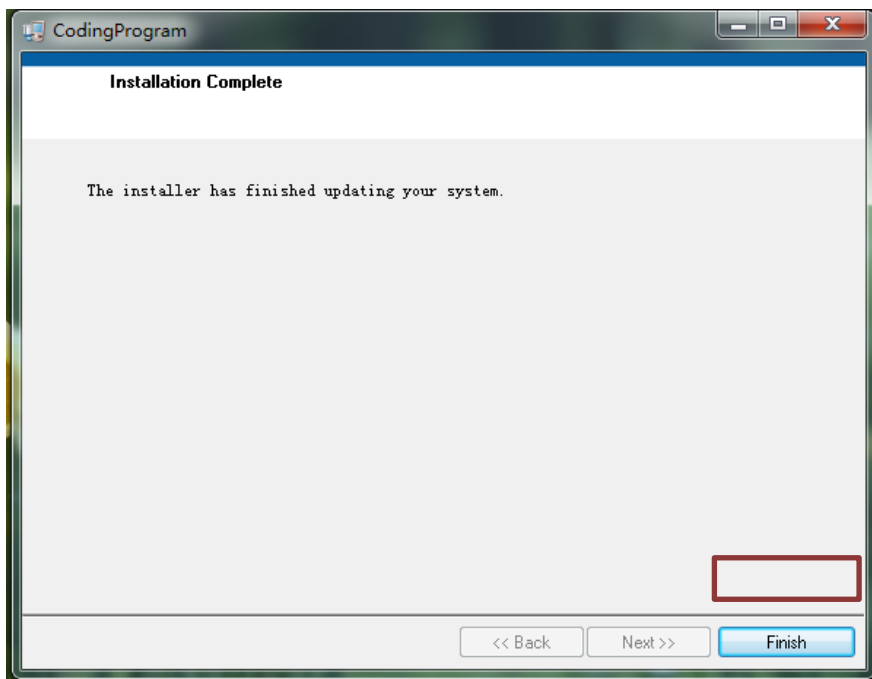
Click the first one and 【Next】



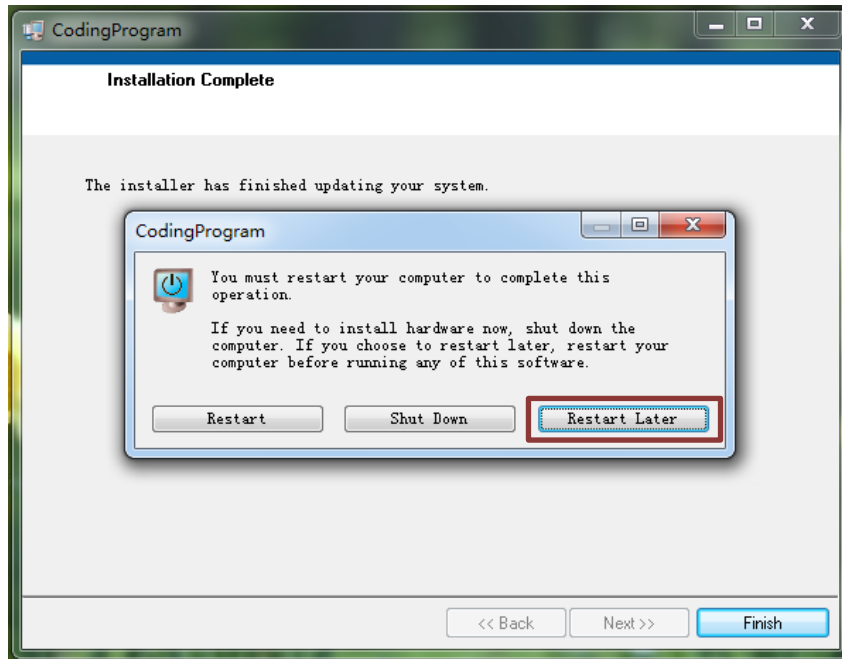
Click 【Next】



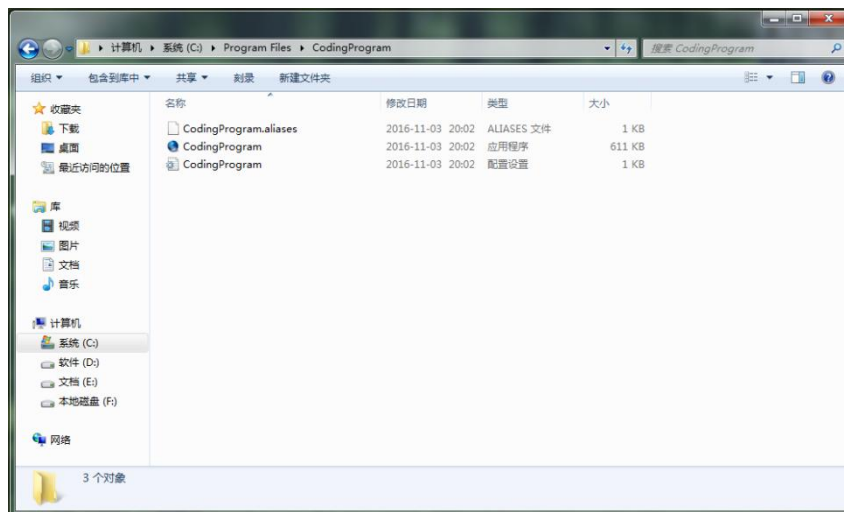
Wait



Click **【Finish】**



Select **【Restart Later】** , click finish



Find the application in accordance with the installation path

3. After installation, open the program installation file, double click CodingProgram.exe or its corresponding shortcut, then you can begin to use.